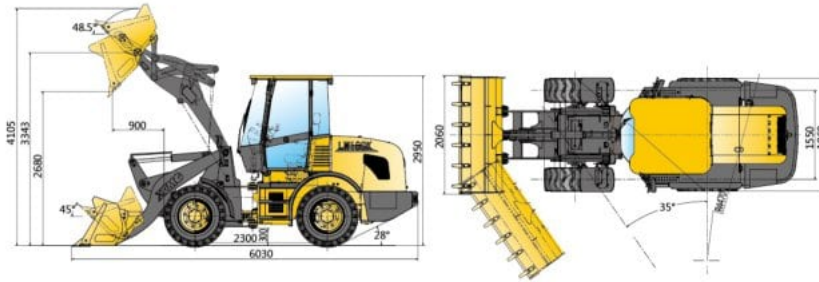


外形尺寸 (高卸型)

Outline Dimensions



主要参数

Main Specifications

项目	Description	参数 Specification	单位 Unit
额定载荷	Rated operating load	1800	kg
斗容量	Bucket capacity	0.9-1.1	m ³
整机工作质量	Machine weight	6200	kg
卸载高度 (地面至主刀板)	Dump clearance at maximum lift	2650-2970	mm
卸载距离 (前轮至主刀板)	Reach at maximum lift	900-1000	mm
轴距	Wheel base	2300	mm
轮距	Tread	1550	mm
最大提升时的铰轴高度	Height of hinge at maximum lift height	3343	mm
工作高度	Working height (fully lifted)	4105	mm
最大掘起力	Max.breakout force	55	kN
最大牵引力	Max.horse power	48	kN
动臂提升时间	Hydraulic cycle time-raise	5	s
三项和时时间	Total hydraulic cycle time	9	s
最小转弯半径(轮胎中心)	Min. turning radius over tyres	4470	mm
铰接角度	Articulation angle	35	°
爬坡能力	Gradeability	28	°
轮胎规格	Tyre size	16/70-20	
整机外形尺寸 (长×宽×高)	Overall machine dimension L×W×H	6030×2060×2950	mm
发动机型号	Model	LR4B3ZU24/0588	
排放标准	Emission standards	国III	
额定功率/转速	Rated Power/Speed	58.8/2400	kW/rpm
燃油箱容量	Fuel Tank	110	L
液压油箱容量	Hydraulic Tank	110	L
行驶速度	Travel Speed	I-gear(F/R)	10 km/h
		II-gear(F/R)	28 km/h
		III-gear(F/R)	- km/h
		IV-gear(F/R)	- km/h

随技术进步, 样本内容、产品结构、配置参数等将不断改进, 恕不另行通知, 样本信息与实物存在差异的, 以实物为准。
No further information of sample contents, product structure and configuration parameters updates.
There maybe some difference between sample books and material objects.Please kind prevail.

(+86-516) 87739525 87739198 87739330

ecommerce@xcmg.com

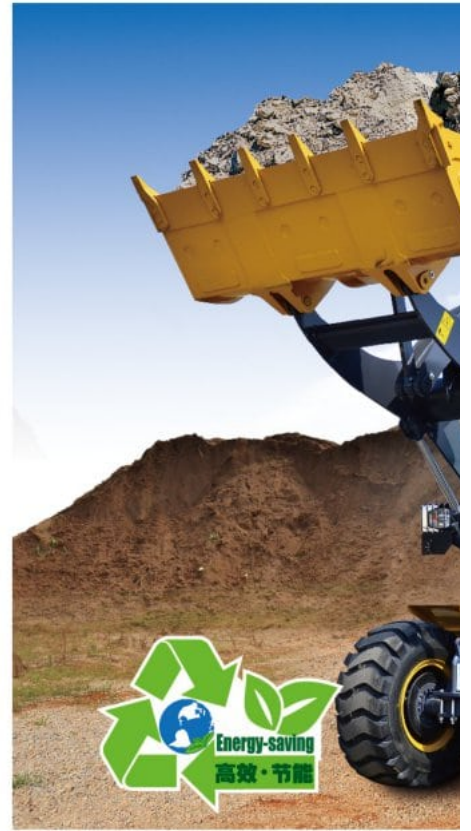
www.machmall.com

(+86-516) 87739298

5th Floor, Block C-1-C, No.6 Software Park Road, Quanshan District, Xuzhou, Jiangsu, China 221008



徐工徐工 助您成功
XCMG FOR YOUR SUCCESS



项目 Description	LW180KV
额定斗容	1m ³
额定载重	1800kg
额定功率	58.8kW
整机质量	6200kg
卸载高度	2670mm
最大掘起力	55kN

20170223